



September 19

RA Monthly Lunch & Learn
@12 pm: Curry Student Center McLeod Suites

September 25

Research Administrators Day

September 29

SVPR/Research Development:
Research Funding Resources for
New Faculty

@11:30 – 1 p.m. 909 Renaissance Park.
[RSVP required](#) as space is limited.

Research Administration

<http://www.northeastern.edu/research/raf/>

RA@northeastern.edu

NSF PAPPG – Proposed Significant Changes



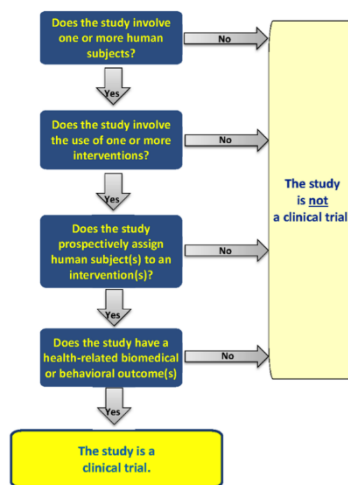
The Proposal and Award Policies & Procedures Guide (PAPPG) is annually updated, and this year is no exception. There are significant changes proposed for the 2018 version, and the Policy Office is currently reviewing and implementing the changes.

The guide is expected to be available in the fall so as to provide 90 days for community review prior to the document taking effect. To learn more, please see the [NSF Aug/Sep Newsletter](#).

Clinical Research Studies v. Clinical Trials

Three years ago, NIH [revised its definition of clinical trials](#), to a “research study in which one or more human subjects are prospectively assigned to one or more interventions (which may include placebo or other control) to evaluate the effects of those interventions on health-related biomedical or behavioral outcomes.”

NIH continues to update its [FAQs](#) and [case studies](#) to clarify whether a research study meets the definition of a clinical trial. A critical distinction is whether the proposed intervention is intended to modify a biomedical or health-related behavioral outcome. To learn more please see NIH’s [Dr. Lauer’s Blog, “Open Mike”](#).



The reason this has now come to the forefront is that in late October 2017, NIH will be releasing new instructions and application forms. The revised forms consolidate human subjects, inclusion enrollment and clinical trial information.

All proposals due on or after January 25, 2018 are required to use NIH FORMS-E. RA and IRB will be providing additional guidance once application instructions and FORMS-E are released later this year.

Announcements

NIH Reminder: Authentication of Key Biological and/or Chemical Resources: Applicants are expected to include a plan to authenticate these resources in the "Authentication of Key Biological and/or Chemical Resources" attachment. See [NOT-OD-17-068](#) for details.

NSF Training Reminder: The second year of NSF training will be launched in the Fall. Relevant employees who took the online training last year will have the option of attending a 2-hour live session in lieu of taking FY18 online training; new relevant employees must take the online training. Additional information, including live training dates, will be emailed directly to all relevant employees and are posted on the [NSF Award Compliance Program](#) website.

RA Roundup

- [On the Art of Writing Proposals: Some Candid Suggestion for Applicants to Social Science Research Council Competitions](#)
- [Northeastern neuroscientist joins Dalai Lama to explore spirituality and science](#)
Northeastern News, August 15, 2017
- [NSF funds new multidisciplinary approaches to study the brain](#)
NSF News, August 8, 2017
- [Cleaning a Dirty Sponge Only Helps Its Worst Bacteria, Study Says](#)
New York Times, August 4, 2017
- [New Study Highlights Strong Link Between Basic Research And Inventions](#)
NPR, August 14, 2017
- [4 Questions For Researchers and Institutions Involved In Human Subjects Research](#)
NIH Extramural Nexus, August 11, 2017

What we're reading:

[Everybody Lies: Big Data, New Data, and What the Internet Can Tell Us About Who We Really Are](#)

SETH STEPHENS-DAVIDOWITZ

To subscribe to *RA eNotes & News* please email:

RA@northeastern.edu

Feedback? The RA Team welcomes your comments, suggestions, and ideas.

Thank you!

Funding Opportunity Spotlight: [National Academy of Education/Spencer Postdoctoral Fellowship Program](#)



NAEd advances research efforts that are designed to improve education policy and practice. The fellowship program supports early-career scholars working in critical areas of education research. NAEd seeks to fund proposals that promise to make significant scholarly contributions to the field of education and to advance the careers of the recipients. NAEd/Spencer individual fellowships provide \$70,000 for one-year.

Deadline: 5 p.m. on November 2, 2017

Hot Topic: Grants.gov SF424 form to be phased out 12/31/17

Grants.gov applicants will no longer be able to download the older, single SF424 PDF application package of forms after 12/31/17.

Applicants can apply for grants using Grants.gov Workspace, which separates the application package into individual forms. Applicants can use Workspace; the new online forms interface is now available in Grants.gov and is only accessible through Workspace.

For any funding opportunities where applicants have downloaded the legacy PDF application package, they will be able to continue to submit that package until March 31, 2018, but updates to the solicitation will NOT be provided after 12/31/17.

S2S Submissions will continue to be supported. For more information about Grants.gov Workspace, please visit the various Grants.gov Workspace resources:

- [Grants.gov Workspace Overview](#)
- [Grants.gov Workspace Training Video Series](#)
- [Grants.gov Community Blog articles on Workspace](#)

Research Administration will be sponsoring training for **Workspace** in October. Stay tuned!